



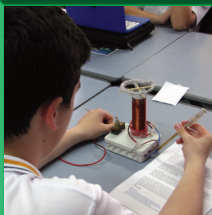
Campion College

Year 7-13 Catholic Co-educational College

providing
students with
empowering
opportunities



its not just
about ideas
it's making
ideas happen



digital world
reflection
academically
development
outcomes



reflection is
where growth
happens

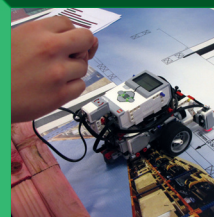


download research tools
achievement standards
expanding minds
real-world commitment
educators engaged ideas
trustees listening
film making authentic
interests active
deeper learning



solving real
problems and
addressing real
issues

findings
hypothesis
engagement
critical thinking
empowering
anyone
anything
connected
create
opportunities



topics goals
success
inspired
collaborate
problem
solving
students



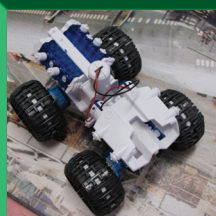
engaged
students doing
high quality,
meaningful work



developing
deeper learning



engaging
students hearts
and minds



providing
real-world
relevance for
learning



2017 PROSPECTUS

Welcome to Champion College



Nau mai, Haere mai, Greetings

The Catholic Church has a long tradition in the field of education. In Gisborne, this tradition spans over 100 years.

A philosophy of education which focuses on establishing high standards and expectations of achievement for students and staff is the hallmark of authentic Catholic education.

At Champion College we are proud to continue this tradition through our focus on developing the total person.

This focus involves:

- Christian faith formation
- The pursuit of academic excellence
- Growth through leadership
- Participation in sports and arts
- A Learning Mentor/Co-ordinator programme to help guide all students
- A focus on digital learning
- An emphasis on a safe and supportive school environment

Champion College is a Year 7 to 13 College. There are a number of advantages of this type of schooling:

CURRICULUM LINKED FROM YEAR 7 TO 13

Perhaps the strongest point in favour of Year 7 to 13 schooling is the way the Curriculum is linked from Year 7 through to Year 13. Senior teaching staff who specialise in particular subject areas guide the learning experiences from when students first enter the College so that there is a clear link with the Senior school.

ONE TRANSITION POINT

Introducing Year 7 students into a school that includes the secondary school years offers a significant advantage for those students who will progress through the College.

SPECIALIST RESOURCES

Younger students benefit from the specialist facilities and staff available to them. Fully resourced science laboratories and modern gymnasium and astroturf courts are an example of this, as is access to specialist careers advisors, a guidance counsellor and academic Learning Co-ordinators for students in Years 7 and 8 and Learning Mentors for students in Years 9 to 13

I invite you to join us in a College that has a warm and cheerful atmosphere, in which students feel secure, are aware of what is expected of them, work hard and are encouraged to develop their God-given talents for the good of all.

Paul McGuinness
PRINCIPAL



*As a practical
expression of our
faith commitment
we focus on
personalising learning
for all students.
Personalising learning
means putting the
student at the heart
of the educational
system.*





Catholic Faith Formation

CHRIST

Christ is the foundation of our existence and the Catholic faith is of primary importance at Campion College. Our faith commitment is an integral part of the College and is celebrated and nourished through the liturgical and formal Religious Education programme. As a way of developing this understanding, all students take part in the Religious Education programme as they progress through the College.



GOSPEL VALUES

At Campion College we place a strong focus on the Gospel values of Jesus Christ. In particular, we emphasise the values of commitment, compassion and community. These three values were exemplified by our founding Saints: Edmund Campion, Mary MacKillop and Marcellin Champagnat. They are the cornerstone for the way we aim to live our lives.

COMMITMENT: *'To always give our best'*

We are committed to the development of the total person to help them reach their full potential. We cater for each student's intellectual, spiritual, emotional, social and physical growth. We also have the same expectation of our students. We help foster self-discipline and time management skills through both classroom activities and the setting of regular homework. We work with students to help them manage a successful transition into the senior secondary school system.

COMPASSION: *'To treat others as we would have them treat us'*

We recognise and respect the uniqueness of every individual as being made in the image and likeness of God. We are committed to giving personalised attention to all students within a caring Christian environment. We work with students in a compassionate way and we foster in our students, a compassionate approach to others.

COMMUNITY: *'To grow to know ourselves through our relationships with others.'*

We recognise that parents are the first educators of their children. We aim to work in partnership with parents to provide the most appropriate support and encouragement to help foster each student's development. We encourage our students to recognise their place in the wider community and the international global village.

PERSONALISING LEARNING

As a practical expression of our faith commitment we focus on personalising learning for all students. Personalising learning means putting the student at the heart of the educational system. It involves developing students as active partners in effective learning.

At Campion College we emphasise the values of commitment, compassion and community. These three values were exemplified by our founding Saints. They are the cornerstone for the way we aim to live our lives.



Student Focused Support

Every student in the College is placed with either a Learning Co-ordinator in Years 7 and 8 or a Learning Mentor in Years 9 to 13. These are specialised staff who help students map their learning goals and career aspirations.

At Campion we recognise parents as the first educators of their children, and the Learning Mentor & Co-ordinator programme helps provide focussed support for each student as they negotiate a curriculum pathway that is personalised toward their learning needs.

STUDENTS IN YEARS 7 AND 8 - The learning needs and support for students change as they develop within the College. In Years 7 and 8 we recognise the need to provide a stable, supportive environment to encourage the successful transition of students into the College, to build on their learning progress and to further their learning experiences with curriculum opportunities available through our secondary school campus.

Parents with children entering Year 7 will have their first meeting with their Learning Co-ordinator prior to entering the College. The Learning Co-ordinator then matches the student with the most appropriate Home Room teacher.

The Home Room teacher teaches an integrated curriculum for students in Years 7 and 8. This teacher provides the primary pastoral care for these students. Students may have the support of their Home Room teacher for up to 70% of their programme. The remainder of their programme is further enriched through learning opportunities with subject specialist teachers.

The Learning Co-ordinator or Homeroom teacher will meet with each family at least twice during the year to evaluate the student's progress and to set the future learning goals.

STUDENTS IN YEARS 9 TO 13 - The learning needs of students change as they progress through the secondary school. The range of learning opportunities and pathways become more diverse and complex. The Learning Mentor for Years 9 to 13 liaises with subject teachers, parents and the student to ensure the Learning Plan is focused for all. Each student remains with the same Learning Mentor for the duration of their secondary schooling. This gives parents one main contact person for their child. When there are several siblings in the College they will all have the same Learning Mentor. The Learning Mentor programme helps provide focussed support for each student as they negotiate a curriculum pathway that is personalised toward their learning needs.

The Learning Mentor will meet with each family at least twice during the year to evaluate the student's progress and to set the future learning directions.

The pastoral and academic guidance given through the Learning Mentor programme is further supported through the Vertical Form class for all students.

VERTICAL FORM CLASS - All students belong to a Vertical Form class. The Form class has students from Year 7 to 13. There are two Vertical Form teachers who look after each class. These Vertical Form teachers form a secondary pastoral care team for each student. As students progress through their years at school, they remain with this same Vertical Form class. This helps them build relationships with students from every other year group and allows the younger students to be supported by senior students and involved more fully in the College as a whole.



The Learning Mentor and Co-ordinator programme provides focussed support for each student as they negotiate a curriculum pathway that is personalised toward their learning needs.





Academic Excellence

Campion College is a school with a strong academic focus.

Providing opportunities for young people to genuinely work towards achieving their potential, whatever their talents happen to be, is fundamental to quality Catholic education.

All students in the College are encouraged and supported to strive for educational excellence. In partnership with their parents and the College Learning Mentors, students set challenging yet achievable academic goals. Learning steps are then put in place to enable each student to reach their goals.

One of the most significant advantages of a Year 7 to 13 College is that it is possible to have long term goals that extend over several years and a co-ordinated programme can be put in place to systematically work towards achieving these goals.

Students in Years 7, 8, 9 and 10 measure their academic progress against the NZ Curriculum learning levels. This enables a long term strategy for academic success to be scaffolded from when the student first enters the College.

Students in Years 11, 12 and 13 study towards gaining the National Certificate of Education Achievement (NCEA). The College philosophy is to encourage and support students to achieve at the excellence level. Our academic results support this emphasis.

Students who manage themselves are enterprising, resourceful, reliable and resilient. They establish personal goals, make plans, manage projects and set high standards.



SCHOLARSHIP PROGRAMMES

High performing senior students are encouraged to enter Scholarship examinations. Scholarship is the highest level of assessment available within the secondary school system. Scholarship Courses follow the NCEA Level 3 curriculum. We provide additional support of one period per week for all Scholarship students.

GIFTED & TALENTED STUDENTS (G.A.T.E)

All students are gifted differently. In instances where students show particular strengths and talents in specific areas of the curriculum they are supported in developing these abilities to their fullest potential.

Students have the opportunity of working at multiple academic levels to meet their academic abilities.

CURRICULUM SUPPORT

Because not all students develop academically at the same rate, we offer a number of programmes that are specifically designed to raise the academic progress of students who find aspects of learning difficult.



Impact Projects

All students from Years 7 to 13 take part in an Impact Project on one day of each week.

Impact Projects encourage students to take control of their learning and to focus on a topic that is of importance to them. Students work for an extended time investigating a complex issue or problem.

Impact Projects are important because they offer:

STUDENT CHOICE

Students are able to study topics that are meaningful to them and so they become more engaged in their learning.

AUTHENTIC PROBLEMS

Students learn about real-world issues. The projects can help establish links with possible career paths.

SUSTAINABLE INQUIRY

Students engage in an extended project. This enables them to take their learning to a deep level, reflect on what they have learned and use feedback to improve their process.

COMMUNITY IMPACT

Students develop a project that has a positive influence on others within our community.

21st CENTURY SKILLS

Students focus on key skills such as goal setting, self management, problem solving and collaboration.

In an Impact Project the process skills are as important as the content learned. Research shows that students who study any topic to a deep level acquire learning skills that are transferable to any new situation. Impact Projects are designed to encourage this deep level learning.

CAMPION KEYS & MEDALS

Academic commitment is recognised through the awarding of the Champion Key for academic attainment in the Middle School or the Champion Medal in the Senior School.



The project is focused on student learning goals, including standards-based content and skills such as critical thinking/problem solving, collaboration, and self-management.



Leadership Through Service

Campion College is strongly focused on developing the leadership capability of all students in the school.

Leadership involves positively influencing others into a course of action that promotes the goals of the College within the community and maintaining this focus over a period of time. Leadership is most obviously shown through *'service to others.'*

Developing the leadership potential of all students is an extremely important step in enabling them to serve the wider world. We want our students to be confident, connected and actively involved citizens of the world who are able to critique society from a Christ-centred perspective, promote social justice and show care for the environment.

Some of the leadership opportunities that are available include:

PEER SUPPORT

The peer support programme is a specifically designed programme to support new students in the Middle School. The programme, run by Senior students, takes place in the first term of each school year and helps new students interact, make friends, access resources and familiarise themselves with the College and its values. The programme contributes towards building a positive social climate within the school and reflects our Special Character at work.

PEER TUTORING

Students at all year levels are encouraged to support others through the peer tutoring programme. Students assist other students with aspects of their academic learning, sports skills, arts development or social integration. This support complements the assistance provided by the teaching staff.

CARITAS

Caritas is a Catholic Aid Agency which works for a world free of poverty and injustice. Most of their focus provides support for communities beyond the shores of New Zealand. At Campion College the Caritas student group supports the work of Caritas New Zealand as well as promoting social justice issues within New Zealand.

YOUNG VINNIES

The Young Vinnies is a student led group who support the work of the St Vincent de Paul Society which is a helping agency, caring for people in need in the community. The focus is mainly on providing practical support for people in our local community.

STUDENT COUNCIL

The Student Council has a representative from each Vertical Form class. The Council provides a student voice within the College community for issues of direct relevance to students.

HOUSE CAPTAINS

Each of the four College Houses has a Captain who is elected by the students. The House Captains are involved in organising House activities and liturgies.

PREFECTS

Prefects are selected from our Year 13 leaders. Prefects are considered to hold the most senior leadership positions in the College.

CAMPION KEYS & MEDALS

Leadership development is recognised through the awarding of the MacKillop Key for leadership in the Middle School and the MacKillop Medal in the Senior School.



Leadership involves positively influencing others into a course of action that promotes the goals of the College within the community and maintaining this focus over a period of time.



Digital Learning

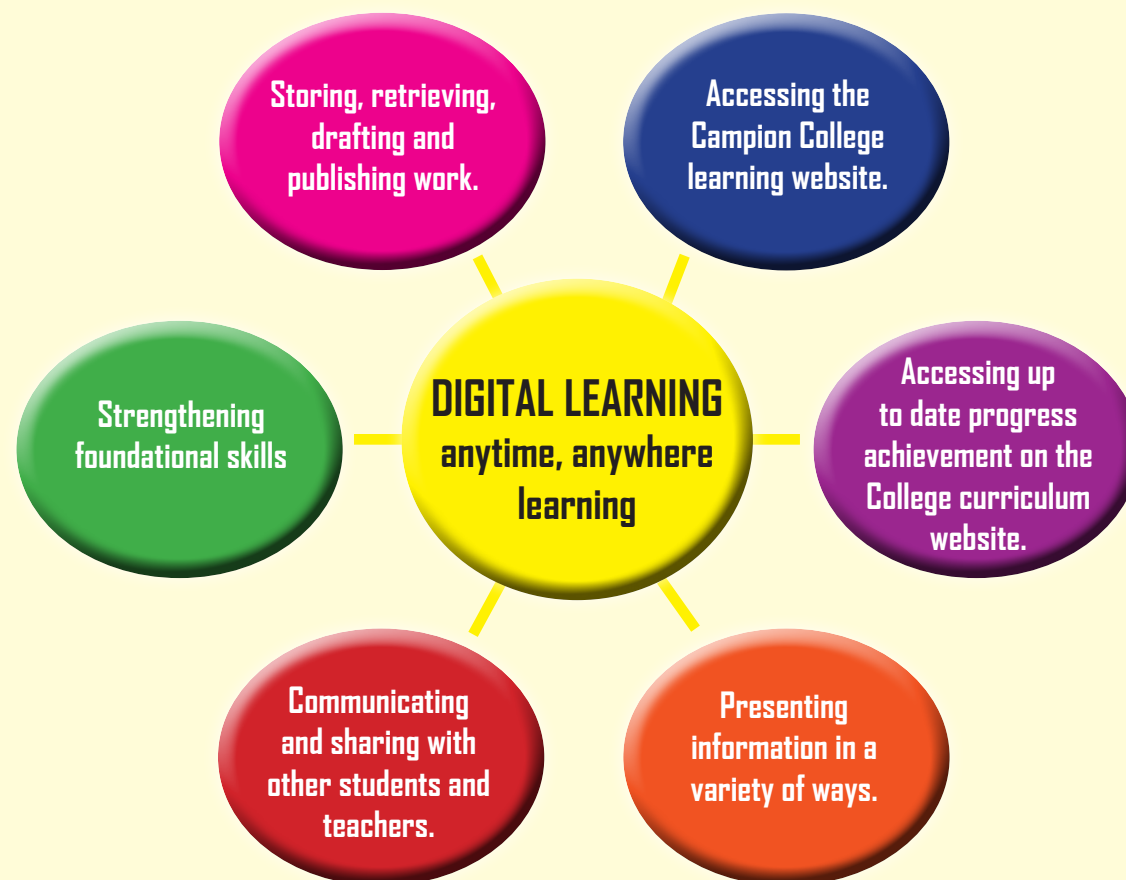
We live in an ever changing world where schools are not the only source of learning. Our students are using digital devices outside of school to communicate and learn. There is evidence that learning for students can be improved by the use of digital devices within the school curriculum.

At Campion we have put in place the infrastructure to allow students to use any internet capable digital device throughout the College, to assist in their learning. There are many benefits of using digital devices as part of the College curriculum programme. These include: improved academic achievement, greater independence in learning, improved critical thinking skills and the ability to work in collaboration with other learners throughout the world.

All students are expected to have their own personal digital device at school as learning throughout the College is focused through an e-learning environment. This device may be a laptop, a netbook, a Chromebook or an ipad. The device must be internet capable.

Within the College a large number of computers and Chromebooks are available for students if they do not have a digital device or if their device is not working on any particular day.

Advice on the type of digital devices recommended by the College is provided to families in Term 4.



Procedures are established within the College to protect the safety of students learning online and to ensure digital devices are not damaged.



Student learning can be enhanced by the use of digital devices. This results in improved academic achievement, greater independence in learning, improved critical thinking skills and the ability to work in collaboration with others.





Sports and the Arts

PARTICIPATION IN SPORTS & THE ARTS

As part of the development of the total person we encourage students to participate and develop skills in sporting and performing arts activities.

Participation in sports and performing arts helps develop:

- a strong sense of community and belonging
- an ability to work with others and form friendships
- confidence and self belief
- self-discipline and perseverance
- goal setting abilities
- dealing with adversity
- an understanding of our own giftedness and an appreciation of the giftedness of others

Sports and performing arts also help develop skills which benefit students in their academic endeavours and in their leadership development.



As part of the development of the total person students are encouraged to participate and develop skills in sporting and performing arts activities. These help develop skills which benefit students in their academic endeavours.

SPORT

Campion College offers a wide range of sporting opportunities for students. Our modern gymnasium and large all weather astroturf area provide excellent facilities for competitive and recreational sports.

SPORTS CHAMPIONS

As well as catering for all students, regardless of ability, we aim to provide a pathway and support for our most talented sports players to enable them to reach the highest levels possible.

WEDNESDAY SPORTS PROGRAMME

Campion College joins with the other Gisborne secondary schools in promoting an inter-school sports programme run on a termly basis. This programme, run in conjunction with Kiwisport, aims to foster more students into school sport.



THE ARTS

The Arts include Drama, Music, Kapa Haka, Dance, Debating, Speech making. As with sport, all students are encouraged to participate in Arts activities which are considered an integral part of our educational philosophy.

Drama and Music are strong traditions within the College with students and groups regularly performing at regional and national level. Students perform in the RockQuest competitions, and there are opportunities for orchestra and chamber music. Drama includes Shakespeare in Schools and College productions.

The annual 'Chanel Shield' provides a Catholic inter-school arts exchange with other secondary schools in the Diocese. The exchange consists of Drama, Public Speaking, Bible Reading and Debating and is a good opportunity to show our strengths in comparison with other schools.



*It all comes down to trust and listening
and making the commitment to find
the one thing to inspire a student.*



CAMPION COLLEGE

41 Champion Road, Gisborne 4010

PO Box 1151, Gisborne 4040

P. 06 867 9309 F. 06 867 9308

E. office@championcollege.school.nz

www.championcollege.school.nz